

Maine Weekly Influenza Surveillance Report

February 9, 2010



John E. Baldacci, Governor Brenda M. Harvey, Commissioner

Cumulative data since April 27, 2009

- 2,232 lab tested cases of H1N1 to date
 - 230 Maine residents have been hospitalized
- 19 deaths reported to date
- 88% of lab confirmed H1N1 cases in Maine residents are under the age of 50 (range 0-89 years, mean of 23 years)

New* This Week

- Federal Flu Code: Regional
 - No new confirmed and probable cases of H1N1 this week
 - No new hospitalizations
 - No new deaths
 - One new outbreak in a K-12 school
- * "New" defined as reported during the previous week (Sunday through Saturday)

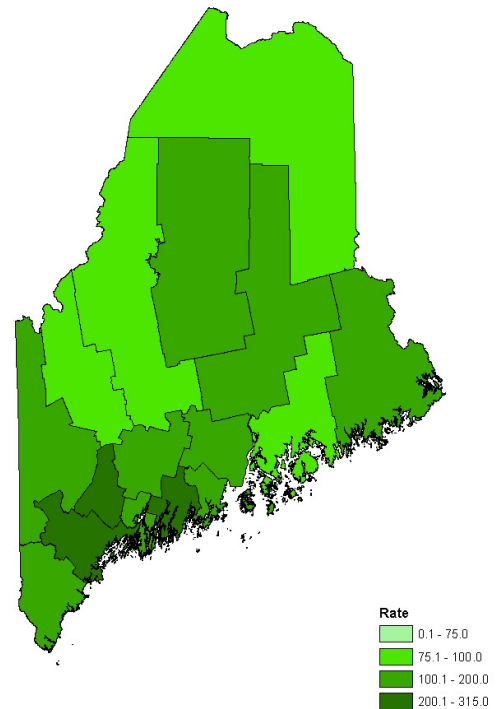
Characteristics of Lab Confirmed H1N1 Influenza Cases - Maine Residents, 2009 - 10

Age Group	Age	Age		At Risk			Hospital Care			Deaths		
		#	New	HCW	New	Pregnant	New	Hospitalized	New	ICU	New	#
<5	245	0	0	0	0	0	28	0	4	0	0	0
5 to 18	1012	0	1	0	0	0	29	0	7	0	0	0
19 to 24	224	0	11	0	8	0	15	0	2	0	1	0
25 to 49	482	0	37	0	23	0	62	0	17	0	3	0
50 to 64	208	0	15	0	0	0	65	0	25	0	7	0
≥65	61	0	0	0	0	0	31	0	10	0	8	0
Total	2232	0	64	0	31	0	230	0	65	0	19	0

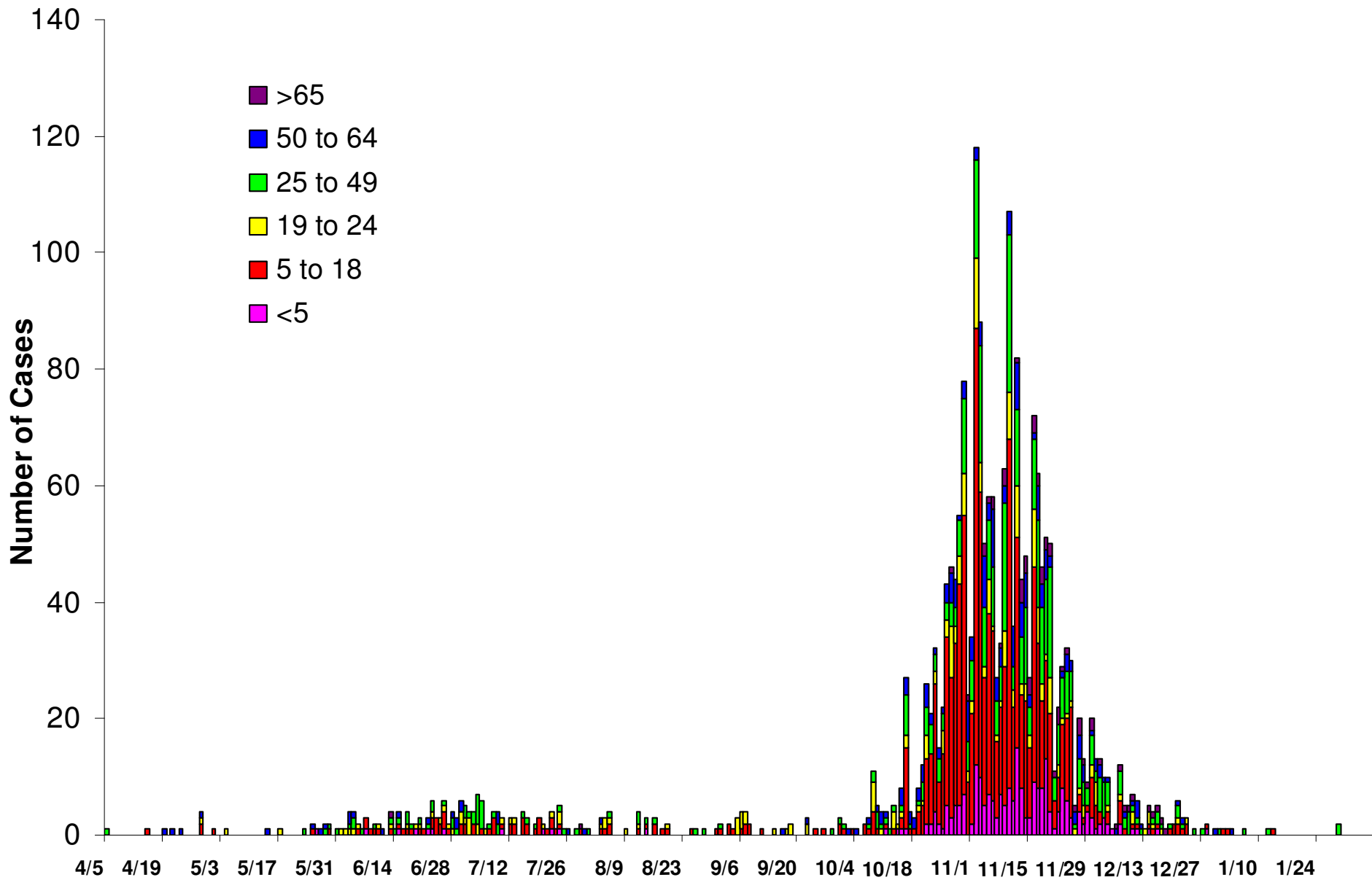
Lab confirmed H1N1 Influenza Cases by County – Maine Residents, 2009 - 10

County	Maine Residents	New	Hosp	New
Androscoggin	223	0	30	0
Aroostook	63	0	7	0
Cumberland	640	0	37	0
Franklin	28	0	8	0
Hancock	49	0	7	0
Kennebec	158	0	18	0
Knox	43	0	6	0
Lincoln	103	0	1	0
Oxford	69	0	8	0
Penobscot	294	0	47	0
Piscataquis	21	0	8	0
Sagadahoc	43	0	0	0
Somerset	47	0	6	0
Waldo	44	0	2	0
Washington	63	0	9	0
York	344	0	36	0
Total	2232	0	230	0

Lab Confirmed H1N1 Infections per 100,000 People by County - Maine Residents, 2009 - 10



Confirmed Cases of H1N1 Influenza By Onset Date* and Age Group – Maine Residents, 2009 - 10



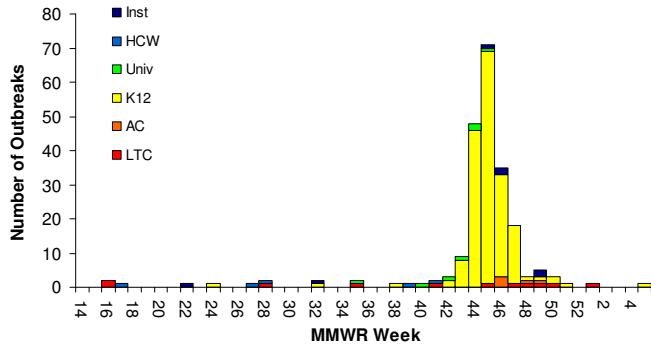
*if onset date is not available, the date reported to the state is used as the onset date

Influenza-Like Illness Outbreaks – Maine, 2009 - 10

Influenza-Like Illness Outbreaks by Facility Type - Maine, April – present, 2009 - 10

Outbreak Facility Type Key:

- LTC - Long Term Care Facility
- AC - Acute Care Facility (nosocomial)
- K12 - School (K-12) or daycare
- Univ - School (residential) or University
- HCW - Health care workers
- Inst - Other institutions (workplaces, correctional facilities etc)

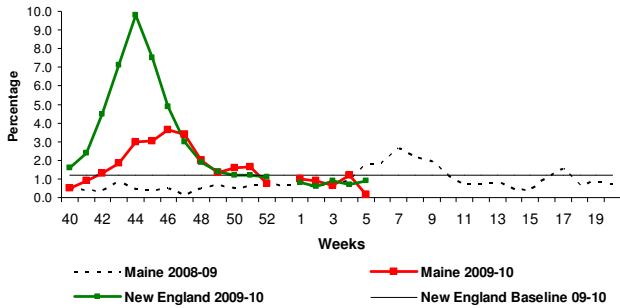


Influenza-Like Illness Outbreaks by Facility Type and County - Maine, April – Present, 2009 - 10

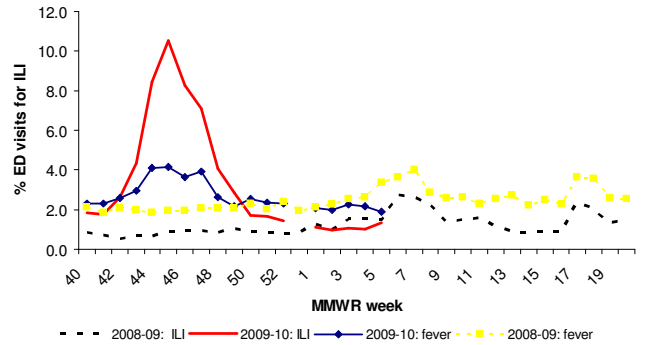
County	LTC	New	AC	New	K12	New	Univ	New	HCW	New	Inst	New
Androscoggin	0	0	2	0	18	0	1	0	0	0	0	0
Aroostook	0	0	1	0	12	0	0	0	0	0	0	0
Cumberland	1	0	2	0	15	0	1	0	1	0	2	0
Franklin	1	0	0	0	0	0	1	0	0	0	0	0
Hancock	0	0	0	0	10	1	0	0	0	0	0	0
Kennebec	1	0	0	0	25	0	0	0	1	0	0	0
Knox	0	0	0	0	4	0	0	0	0	0	0	0
Lincoln	1	0	0	0	6	0	0	0	0	0	1	0
Oxford	2	0	0	0	9	0	1	0	0	0	0	0
Penobscot	0	0	0	0	34	0	0	0	0	0	3	0
Piscataquis	0	0	0	0	5	0	0	0	0	0	0	0
Sagadahoc	0	0	0	0	3	0	0	0	0	0	0	0
Somerset	1	0	0	0	8	0	1	0	1	0	0	0
Waldo	0	0	0	0	9	0	0	0	0	0	1	0
Washington	1	0	0	0	8	0	1	0	0	0	0	0
York	3	0	0	0	14	0	1	0	0	0	1	0
Total	11	0	5	0	180	1	7	0	3	0	8	0

Surveillance Information

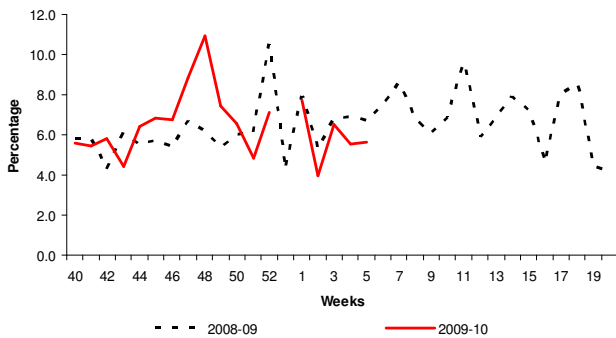
Outpatient Visits for Influenza-like Illness – Maine, 2008-10



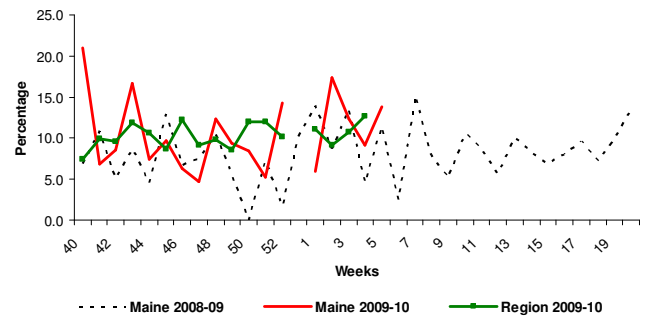
Emergency Department Visits for ILI and Fever at Thirteen Hospitals – Maine, 2008 -10



Hospital Admissions Due to Pneumonia or Influenza – Maine, 2008-10



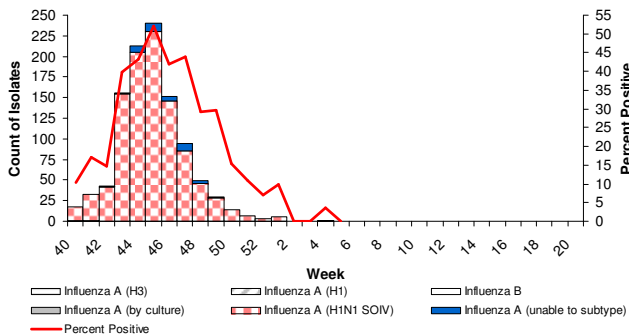
Percentage of Deaths Attributable to Pneumonia or Influenza – Maine, 2008-10



Lab Data

- 7,849 influenza tests have been performed at HETL since April 27, 2009
 - 18.0% of tests have been positive for H1N1

Respiratory Specimens Positive for Influenza from HETL – Maine, 2009-10



Respiratory Specimens Positive for Influenza from Two Reference Laboratories - Maine, 2009 - 10

